

## D25mm 360° Neon Strip

### Data Sheet



- high quality gold wire lamp beads, LM80 test certification
- SM18522PS, grayscale, etc. : 65536 level, refresh frequency 4KHZ
- Unique optical light distribution structure design, uniform surface light without shadow
- silicone extrusion molding, food grade silicone material, the surface is sprayed and comfortable to touch
- salt solution resistance, acid and alkali corrosion resistance, flame retardant resistance, UV resistance
- Waterproof grade IP67 • 5 years warranty

#### Technologies

- ON/OFF, DMX, SPI

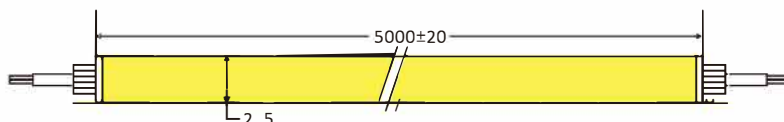
#### Application

- This product is suitable for hotels, KTVs, homes, cabinets, courtyards, etc., for contouring, atmosphere lighting decorative lighting and other purposes.

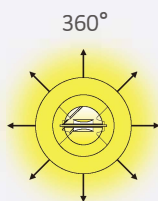
#### Color Options



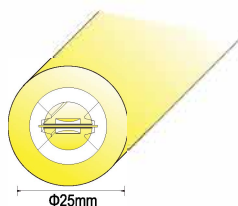
#### Dimensions



#### Beam Angle



#### Sectional drawing



#### Recommended Accessories



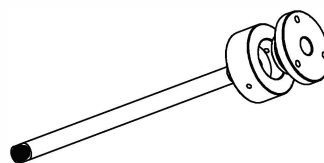
Straight exit end cap



Side exit end cap



End cap



Hoisting parts

## Product Specifications

P/N	LED Quantity	CCT K	CRI	LED (SM)	LUMENS (lm/m)	Vf. (V.)	Current (mA/M)	Power (W/M)	Cut Length (MM)	Max Run (M)
D25	2835	2700	/	360	800	24	666	16	33.3	5
		3000			800					
		4000			850					
		6500			850					
D25 RGBW	2835	R:620-625	/	280	450	24	666	16	50	5
		G:525-530								
		B:465-470								
		R:620-625								
D25 DMX	5050	G:525-530	/	168	410	24	666	16	83.3	5
		B:465-470								
		W:2700-6500								

## Other Specifications

Protection grade	IP67
Working temperature(°c)	-25~+60
Storage environment temperature (°c)	-25~+70
Standard length	5
Maximum cascade length(m)	5
weight	/

## Remark

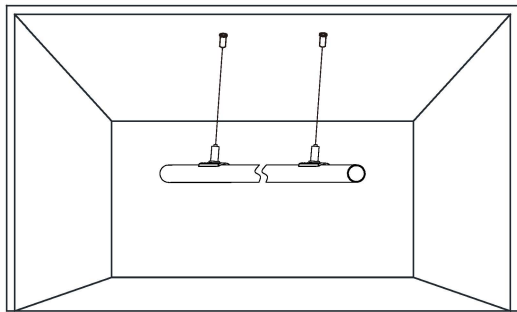
- The test environment temperature is 25±2°C;
- The above data are typical values, the actual parameters of the product may be different from the typical data; the data is subject to change without notice;
- The above "/" means that this parameter is not required for the time being.

## Applied Standards

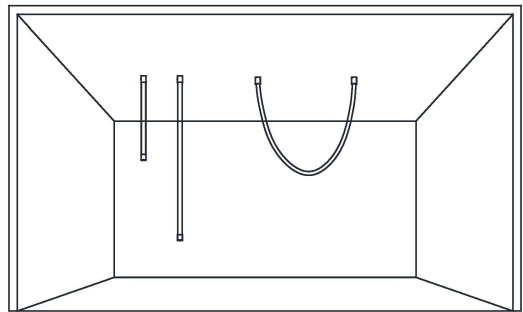


## Mounting with aluminium profiles

Install with the screws provided. Do not use screws of other types or sizes that do not meet requirements.

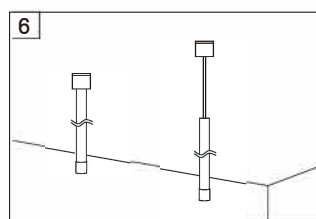
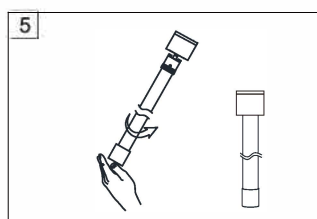
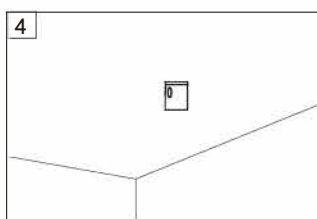
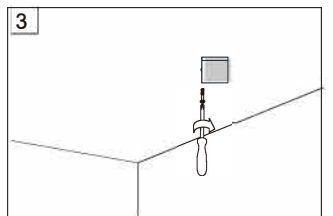
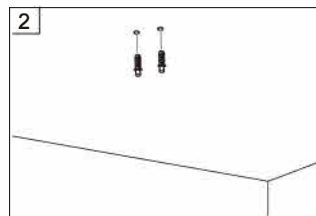
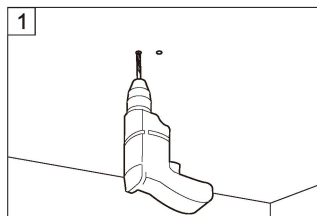
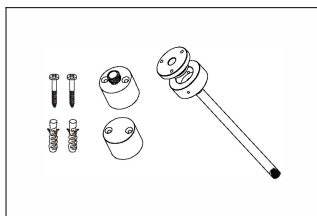
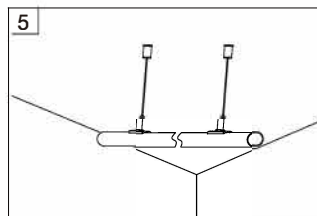
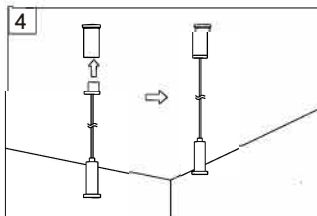
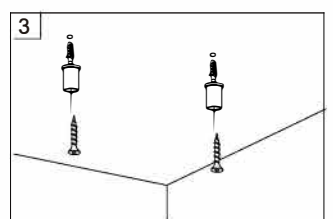
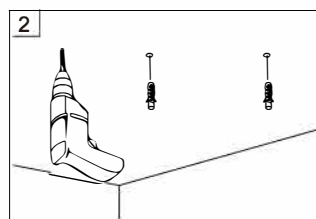
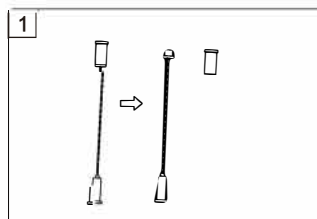
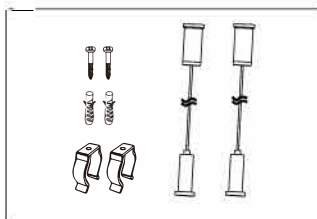


Ceiling-mounted installation



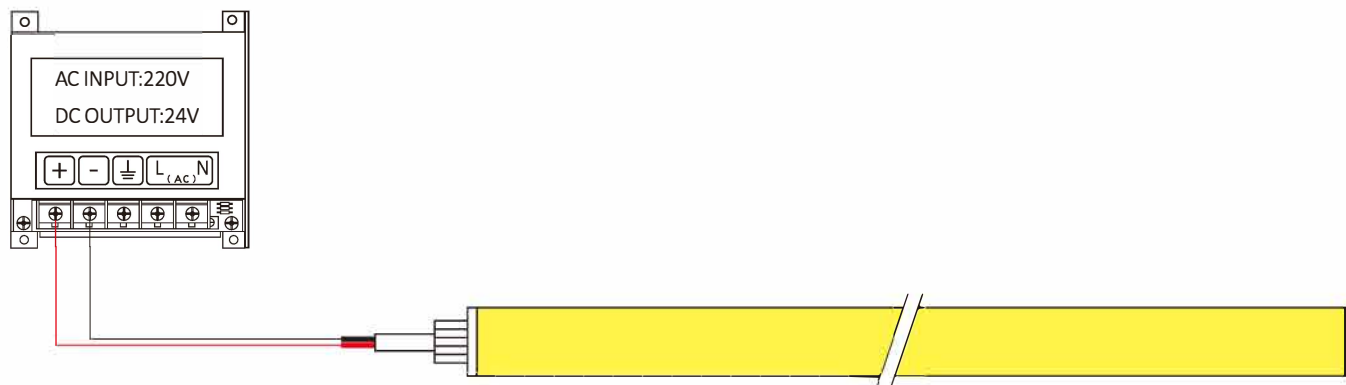
Snap-on clip and suspension rope installation

### Ceiling-mounted installation Installation method

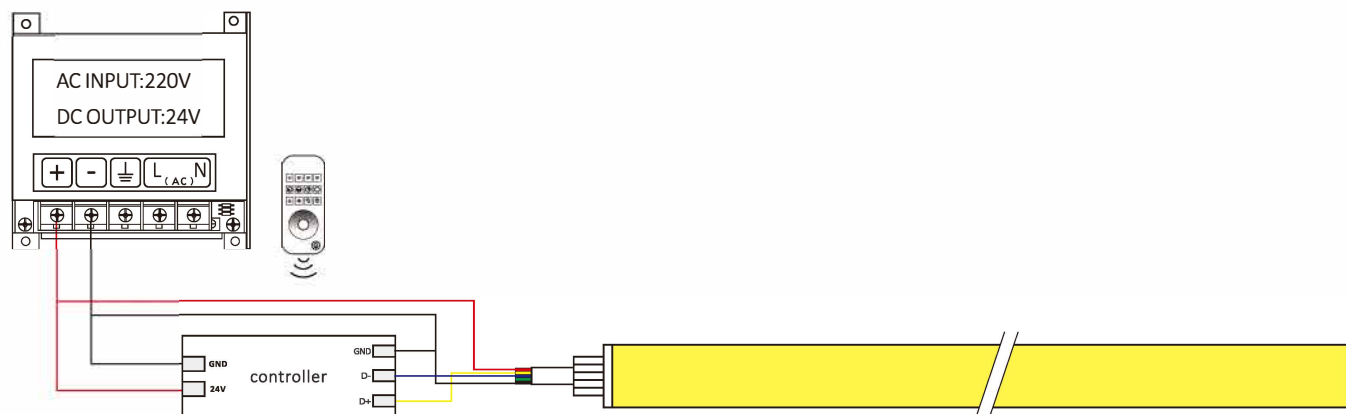


## Schematic diagram of electrical connection

### 1. Monochrome temperature wiring diagram 1: Power + lamp belt connection mode



### 2. SPI wiring diagram: Power + controller + light belt connection mode



### 3. DMX wiring diagram: Power + controller + light belt connection

